

Real Time
Networks

 AssetTracer

Intelligent Locker Solutions for Managing Assets

Enhanced security, real-time
accountability, and operational efficiency.



AT
Series



SCAN ME

Contact us for a
LIVE DEMO and
see AssetTracer
in action.



1-800-331-2882



info@realtimenetworks.com



www.realtimenetworks.com



Accountability for your Critical Assets

Secure and track tools, electronics, mobile devices, firearms, and other vital gear.

The AssetTracer Intelligent Locker boasts a flexible, modular design so you're able to get maximum accountability for your assets with a solution custom-built to your exact needs.

- ✔ Prevents assets being lost or stolen
- ✔ Saves time by automating manual processes
- ✔ Keeps damaged assets out of circulation
- ✔ Integrates with all major Access Control Systems
- ✔ Secures assets with biometric and multi-factor authentication
- ✔ Simplifies compliance with detailed reporting



Asset Management Solutions

- ✓ Law Enforcement
- ✓ Correctional Facilities
- ✓ Warehousing & Distribution
- ✓ Utilities & Energy Sector
- ✓ Manufacturing Facilities
- ✓ Government & Military
- ✓ Critical Infrastructure
- ✓ Cities & Municipalities
- ✓ Hotels & Hospitality
- ✓ Casinos
- ✓ Educational Institutions
- ✓ Fleet and Transportation



Uses and Benefits



Secure Storage & Management

Reduce asset loss by securely storing and managing sensitive or valuable items such as electronics, specialized tools, or weapons.



Asset Control & Accountability

Generate a reliable audit trail of who accessed which stored assets and when by restricting access to authorized personnel only.



Automated Distribution & Retrieval

Eliminate manual tracking processes and streamline workflows by automating the distribution and retrieval of assets.



Charging & Maintenance

Ensure devices like laptops, tablets, radios, and tools are charged, updated, and ready for use when needed.

Use Cases

- ✓ Electronics Secure Storage
- ✓ IT Device Management
- ✓ Real-Time Asset Surveillance
- ✓ Evidence Chain-of-Custody
- ✓ Armory or Weapons Management
- ✓ Medication Secure Storage
- ✓ Personal Storage Lockers
- ✓ Gear Kits



AssetTracer | AT Series

The AssetTracer AT Series Intelligent Locker is a flexible, modular asset tracking solution for a wide variety of assets and use cases.

- Durable and highly configurable
- Rapid touchscreen transactions
- Automated, real-time alerts via email or SMS
- Users authenticate by prox cards/fobs, biometrics or smartphone
- Optional pin-hole camera records transactions
- Optional 120V charging, Ethernet or USB ports



AssetTracer | UT Series

The AssetTracer UT Series Intelligent Locker offers a rugged and secure storage solution specifically designed for safeguarding larger assets and gear.

- All-welded steel
- Configurable with adjustable shelving and dividers, heavy duty drawers or bins, hooks and hanging rods, or long gun racks
- Optional 120V power outlets, Ethernet or USB ports, or pin hole cameras



Optional Features (AT and UT Series)

Asset Surveillance



RFID



TapID

In-compartment Power & Connectivity



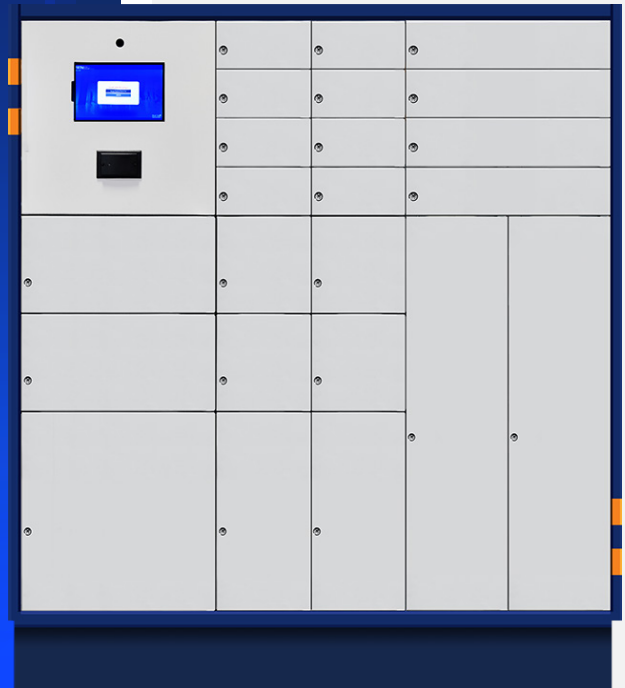
USB



Power



Ethernet



(AT Series)



(UT Series)

AT Series Locker Modules & Compartments



INTERNAL DIMENSIONS (W X D X H)



Small 8 Door

7.6 x 14 x 3.9 inches
19.31 x 35.63 x 9.85 cm



Tall 1 Door

17.5 x 14 x 18.6 inches
44.56 x 35.63 x 22.31 cm



Medium 4 Door

7.6 x 14 x 8.8 inches
19.31 x 35.63 x 22.31 cm



Tall 2 Door

7.6 x 14 x 18.6 inches
19.31 x 35.63 x 47.23 cm



Wide 2 Door

7.6 x 14 x 3.9 inches
19.31 x 35.63 x 9.85 cm



Double Tall 1 Door

17.5 x 14 x 38.2 inches
44.56 x 35.63 x 97.07 cm



Wide 4 Door

7.6 x 14 x 3.9 inches
19.31 x 35.63 x 9.85 cm



Double Tall 2 Door

7.6 x 14 x 38.2 inches
19.31 x 35.63 x 97.07 cm

Compartment door options: solid steel, vented steel, polycarbonate



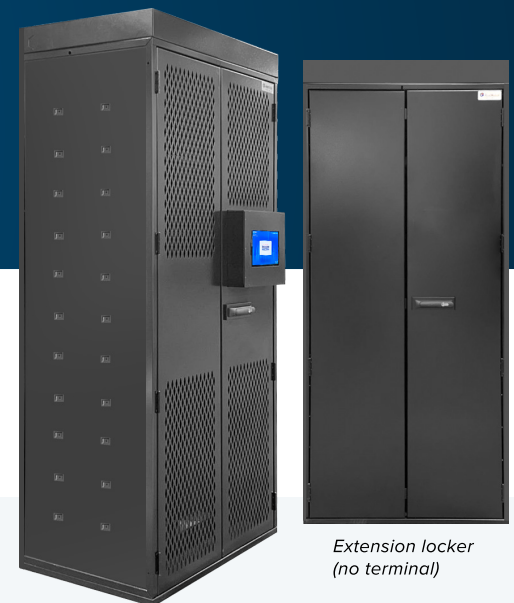
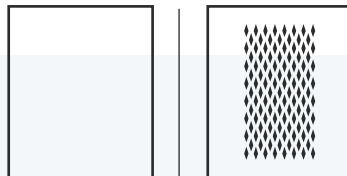
UT Locker Modules & Compartments

AssetTracer UT Series Intelligent Lockers are constructed with all-welded joints, with 13 gauge steel sides and 18 gauge cold rolled sheet steel backs and doors.

Internal (W x D x H): 36" x 22.8" x 76" External (W x D x H): 38" x 23.9" x 84"

Compartment door options:

- Solid steel or steel mesh
- Embedded terminal or side-mounted



*Primary locker
(with embedded
touchscreen terminal)*

*Extension locker
(no terminal)*

AssetTracer Features

RTNHub Enterprise Software revolutionizes asset and Intelligent locker management by providing comprehensive, real-time insights and control.



Durable, highly configurable locker system



Rapid touchscreen transactions



Users authenticate using proximity card access, biometrics or smartphones



Automated, real-time alerts via email and SMS



Robust Role-Based Access Control functionality



Optional asset surveillance tracks assets inside lockers



Powerful, custom reporting through browser-based software



Software hosted on-premise or in the cloud



RealCare Plans for extended warranty and service

Comprehensive Reporting

Reports are customizable for any auditing process or regulatory need, including: Current asset holders, by individual or group; all transactions by day, week, or month; all alarms not cleared; and real-time transaction histories. Reports can be exported to Excel, PDF or CSV and delivered via email based on triggers you set, such as a late asset return, or on a schedule you specify.



Software House

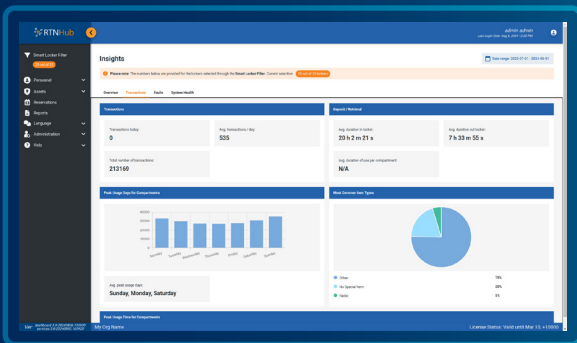


Integrations via RTNConnect

RTNConnect is the leading integration and data translation platform for connecting your data systems. Use it to seamlessly integrate AssetTracer intelligent lockers and virtually any of your other existing systems, such as access control, support ticketing, or data management, to ensure a smooth and efficient workflow.

Security

AssetTracer Intelligent Lockers and RTNHub Enterprise Software ensures your security requirements are met and exceeded.



- ✔ Supports a range of authentication methods, including PIN, Prox card access, biometrics and smart phone
- ✔ Multi-factor authentication (MFA/2FA)
- ✔ Prevents simultaneous login of same User-ID
- ✔ User locked out after configurable number of failed login attempts
- ✔ Accounts disabled if not used for configurable time period
- ✔ Record all unsuccessful login attempts with details
- ✔ ISO/IEC 27001:2022 Certified

Real Time Networks



AssetTracer is a premier brand of Real Time Networks (RTN).

With over 2,000 installations of our key and asset management solutions and operations in the United States, Canada, and select countries around the world, Real Time Networks (RTN) is a leading provider of asset accountability and security solutions for managing assets.

For over 20 years, RTN has built a reputation for delivering innovative security solutions backed by industry-leading customer service and support.



IS 811690

1-800-331-2882

info@realtimenetworks.com
www.realtimenetworks.com

Technical Specifications

Power

- 120V Power
- 5° to 50°C (40° to 120°F) operational temperature range
- Optional Backup Battery

Authentication

- Prox card (compatible with most major Access Control Systems)
- Biometric (fingerprint, facial, non-touch palm)
- PIN code
- Dual Authentication - Card+Pin or Bio+Pin

Digital

- SSL encryption in transit
- Enterprise-grade SQL Database backend
- Network interface: RJ45 Ethernet or WiFi

Lockers

- 18 gauge steel
- Optional shatter-proof clear polycarbonate doors



All systems come with a 1-year warranty on hardware and software. RealCare Service Plans are available covering on-call support, software updates, and hardware.

